



EXHIBIT & DISPLAY GROUP

Mary Carrell
Orbus Exhibit & Display Group
630.633.7081
mcarrell@orbuscompany.com
www.orbuscompany.com

FOR IMMEDIATE RELEASE

ORBUS EXHIBIT & DISPLAY GROUP ADDS 33 NEW STAFF IN Q1 2011

Bolingbrook, IL - May 17, 2011: The Orbus Exhibit & Display Group, one of North America’s leading suppliers of display, exhibit, and event solutions has added 33 new employees to its roster of staff in two facilities since January. The addition of these employees marks 250 staff in total.

“Our developing pool of talent means we are able to combine fresh enthusiasm with existing expertise to provide clients with a stronger support system and ensure we continue to provide them with the best possible products and customer service. We look forward to continued growth in 2011.” says Giles Douglas, President & CEO of Orbus Exhibit & Display Group.

Bolingbrook Facility



Adam Larson
SignPro Sales
SignPro Systems



Sophia Cryns
East Coast Regional Sales Consultant
Sales



Nancy Bunce
Sewer
Graphics



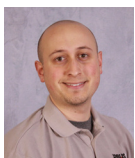
Leanna Gore
Art Assistant
Graphics



David Mikulecky
Southeast Regional Sales Consultant
Sales



Samuel Najarro
Production Associate
Production



Ron Bejger
Quality Assurance Assistant
Graphics

Bolingbrook Facility



Bill Roman
East Coast Regional Sales Consultant
Sales



Martin Cooney
Graphics Finisher
Graphics

Niles Facility



Dora Perera
Project Manager
Project Management



Daniel Hammers
Production Associate
Production



Hector Medina
Machine Operator
Machine Shop



Maria Ramirez
Production Associate
Production

Bolingbrook Facility



Nathan Erber
Graphics Production
Graphics



Kari Kermerer
Brand Manager
Marketing



Sarah Niemic
Midwest Regional Sales Consultant
Sales



Jacob Vidovich
Graphics Production
Graphics



John Robbins
Graphics Production
Graphics



Elvis De La Puente
Art Coordinator
Graphics



Cynthia Nunez
Accounts Receivable
Accounting



Raul Ramirez
Art Coordinator
Graphics



Damen Garcia
West Coast Regional Sales Consultant
Sales



Cesar Herrera
Shipping Clerk
Shipping

Niles Facility



Hugo Valle
Production Associate
Production



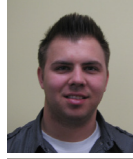
Shannon Roman
Art Assistant
Graphics



James Jensen
Art Assistant
Graphics



Anne Marie Abbate
Art Assistant
Graphics



George Pashaliev
Product Detailer
Production



Daniel Shea
Graphics Production
Graphics



Matt Finney
Estimator
Design



Archie Castillo
Shipping Clerk
Shipping



David O'Brien
Product Detailer
Project Management



Michael Asburger
Product Detailer
Project Management

The Orbus Exhibit & Display Group is a market-leading, privately owned group of companies that specialize in the manufacture and trade only supply of portable modular and custom modular, exhibit and display, products, graphics and solutions. Companies within the group include Orbus365, SignPro Systems, and Origin.